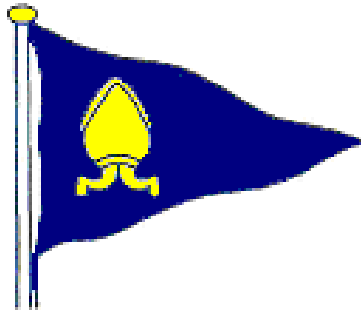


Brading Haven Yacht Club

www.bhyc.org.uk



Notice of Race Sailing Instructions

Icebreaker Series 2012

(For Sailing Dinghies PY 1250 and over)

**Racing is organised on behalf of
Brading Haven YC Racing Section by:**

**Robin Lobb, Rear Commodore Sailing
John Garlick, Results Secretary
Roger Herbert, Sailing Committee Member**

&

Chris Wilkinson, Commodore

Any amendments to the Instructions, Programme or Support Rota will be published on the notice board in the Club Foyer and on this web site and where possible will be circulated by e-mail to those who have this facility

Icebreaker Programme 2012

DATE		HW	Ht (m)	START	LINE	RACE
JANUARY						
Sun	8	10.29	4.5	11.00	H	ICE 1 - 2
Sun	22	10.25	4.6	11.00	H	ICE 3 - 4
FEBRUARY						
Sun	12	14.15	4.7	13.00	H	ICE 5 - 6
Sun	26	13.54	4.4	13.00	H	ICE 7 - 8
MARCH						
Sun	11	13.17	4.8	13.00	H	ICE 9 - 10
Sun	25	13.54	4.5	13.00	H	ICE 11-12

(Tide Times are Portsmouth)

Two races are scheduled on each day and will be scored separately

Prize-giving will be at the Fitting Out Supper on Saturday 31st March

B.H.Y.C. RACING INSTRUCTIONS

1. Notice of Race

Racing **for sailing dinghies of Portsmouth Yardstick 1250 and over (See 19)** will take place on the dates and times listed above.

2. Entry Form:

Entrants for all races must have signed an Entry Form, which includes agreement to be bound by the Conditions of Entry prior to taking part in their first race of the season.

Parents or guardians must countersign Entry Forms for persons under 18 years of age. Forms will be available from the Race Box, the Club Office and from the Bar Staff.

Failure to complete the form will result in the boat being scored DNS (Did not start).

3. Conditions of Entry:

The Race organisers shall not be liable for any loss, damage, death or personal injury to the owner/competitor, the skipper or crew, as a result of their taking part in a race or races sailed in this programme. Moreover, every owner/competitor warrants the suitability of the boat for the race or races. Further the entrant is entirely responsible for their own safety, whether ashore or afloat and nothing whether in the Notice of Race, the Sailing Instructions or anywhere else reduces this responsibility. It is for the entrant to decide whether they are fit to sail in the conditions in which they will find themselves. By launching or going to sea, the entrant confirms that they, their boat and their crew are fit to sail and compete in them. The entrant is required to have adequate insurance against third party risks of at least £3m. Buoyancy shall be in accordance with class rules (or as built, in the absence of any specific class rule). Nothing done by the organisers shall reduce the responsibility of the entrant nor will they make the organisers responsible for any loss, damage, death or personal injury, however it may have occurred, as a result of them taking part in the racing. The organisers encompass everyone helping run the race and the event and include the organising authority, the Race Committee, the Race Officer, patrol boats and Beach-masters. The provision of patrol boats does not relieve the entrant of their responsibilities.

4. General Conditions of Racing:

- a) All races are held under the International Sailing Federation (ISAF) Racing Rules of Sailing 2009 – 2012 (RRS), prescriptions of the RYA, SCRA Regulations and relevant Class Rules except as any of these are changed by these sailing instructions.
- b) All entrants are required to sign on at the Race Box before starting and must subsequently notify the Race Officer if they retire or fail to complete the course as instructed.
- c) **Entrants who are not BHYC Members must obtain the approval of the Race Officer before entering a race and complete the Entry Form and sign on at the Race Box.**
- d) Adequate personal buoyancy and appropriate protective clothing must be worn by all crew members.
- e) The Club draws attention of members to Rule 9 of the International Regulations Preventing Collisions at Sea (1972), in respect of operation of vessels in the vicinity of the deepwater channel.
- f) Any collision with a moored boat must be notified to the owner and to the Race Officer without delay.

5. Racing Notices and Signals:

- a) All dinghies will race together. The start time shown in the programme above is that of the first race.
- b) Notice of alterations or supplements to the racing instructions will be indicated by International Code Flag “L” being flown from the Race Box or Committee Boat. The additional instructions will be posted on the official Notice Board which is located at the Race Box or, in case of a Committee Boat start, may be given orally by loudhailer. In addition a whiteboard may be used.
- c) The following Class Boards/Class Flags will be used to identify racing groups. **Additional Class Starts may be offered at discretion of the Race Committee.**

All boats: Numeral Pennant 4

6. Courses and Course Signals:

The racing area is shown on the chartlet within these instructions

- a) The course to be sailed, consisting of fixed and movable inflatable buoys will be displayed by letters, numbers and symbols as listed in these instructions. This will be displayed on the frame above the Race Box or on the Committee boat no later than at the Preparatory Signal.
- b) A Green background indicates a mark to be left to Starboard; a Red background indicates a mark to be left to Port.
- c) The sequence of marks indicates the order in which the course is to be sailed. When inflatable marks are to be used their approximate position will be indicated on the chalk board at the Race Box.

7. Mandatory Marks:

To minimise the risk of collision with larger vessels using the main channel the following course restrictions must be obeyed.

Course	Leave to Port	Leave to Starboard
On a leg of a course which is heading towards the harbour entrance:	Buoys 14, 12A, 12 & 13.	-----
On a leg of a course heading towards BHYC	-----	Buoys 13, 12, 12A & 14

Note: Buoys 12, 12A & 14 are Red Cans and mark the main channel situated between Fisherman’s Wharf and the harbour entrance. 13 is a green buoy by the entrance to the harbour. In the event that buoys have been lifted for winter servicing, alternative marks may be used at the discretion of the Race Officer.

8. Number of Rounds:

- a) When a race requires the course, or part of the course, to be sailed more than once, a black board with white diamonds will be displayed in the course sequence. The number of diamonds on the board indicates the number of times that the sequence preceding it shall be sailed before continuing with the remainder of the course.
- b) If a black and orange chequered board is displayed in the course sequence, the mark(s) of the course preceding it shall be sailed before continuing to the marks and number of rounds displayed thereafter.
- c) When a black board with a white letter “L” is displayed in the Committee Boat course sequence all boats shall pass through the finish line, from the direction of the last mark, before sailing the remainder of the course or the next round as appropriate.

9. Shorten Course and Course Changes:

- a) These will be indicated by the display of International Code Flag “S” or “C”, with appropriate sound signals and new course displayed, or where necessary, by verbal instructions of the Race Officer relayed by the Coxswain of the Support Boat.

- b) Spinnakers must not be set in the harbour

10. Starting Signals:

For both Harbour Line and Committee Boat Starts, starting Signals will conform to RRS 26. The Harbour Line Starting System is further modified by using lights instead of flags as follows.

Class	Warning Signal (-5)	Preparatory Signal (-4)	One Minute (-1)	Start
All boats	Red light On	White light On	White light Off	Red Light Off

11. Recalls:

- a) Individual boats over the line at the start of a race will be recalled by a second sound signal. For a Committee Boat start the "X" will fly until line cleared or in the case of Harbour Starts, an Orange Warning will come 'On' until such boats are wholly returned to the pre-start side of the line. (This varies RRS 29.1).
- b) Where a number of unidentified premature starters are involved, or there has been an error in the starting procedure, a General Recall will be signalled by two sound signals and hoisting International Code Flag 'First Substitute'. The warning signal for a new start for the recalled class will be made one minute after the 'First Substitute' is removed (one sound). Starts for any succeeding classes will follow the new start.

12. Starting and Finishing Lines:

Harbour Line:

- a) The Starting and Finishing Line is the extension of a line through the Red and White Post on the Race Box and the Black and White Post situated on the foreshore in front of it, which also serves as the Inner Limit. The Outer Limit is a Black and White Post situated 500 feet North of the Race Box.
- b) All boats must leave "H" buoy to port before crossing the Finishing Line, crossing from West to East.

Committee Boat Line:

- c) The Starting and Finishing Line is an imaginary line connecting the Mast on the Committee Boat, from which an Orange Rectangular Flag is flying and an adjacent nominated Navigation Buoy, Racing Mark or Inflatable Mark which serves as the Outer Limit. A small buoy - the Inner Limit - may also be laid, not necessarily on the line, approximately 10 yards from the Committee Boat. For the purpose of RRS 31.1 the Outer Limit, Inner Limit and Committee Boat are Marks of the Starting Line.
- d) Boats must cross the Starting Line in the direction of the first Racing Mark and must finish from the direction of the last Racing Mark.
- e) The Committee Boat will normally fly a **blue flag** to indicate it is in position for the finish.

13. Penalty System:

The penalty specified under RRS 44.1 (touching a mark – 1 turn) shall apply. The penalty under RRS 44.1 (breaking Part 2 rule) shall also be 1 turn.

14. Protests:

An informal protest hearing may be heard in order to encourage competitors to lodge protests when they might not normally do so. The parties to the protest must first agree to the Informal Meeting, otherwise a formal hearing will take place as per RRS Part 5 Sections A & B.

Protestees should lodge their intention with the Race Officer as soon as possible after the incident. The time limit is two hours after the last boat finishes the race.

The full procedure for the informal hearing is posted in the Race Box and in the Racing Results folder, situated in the Club foyer.

15. Scoring:

- a) Scoring for the series will be in accordance with RRS Appendix A4.1 as modified by Appendix A9 using the Low Point System. Ties will be broken by RRS Appendix A8. Points will be awarded to entrants, not the boat.
- b) Entrants who carry out Race Management duties, or represent BHYC in a programmed sailing match in lieu of racing in a series, may be awarded the average points as compensation, calculated from the mean of their other results for races they have actually sailed in the series. It is the duty of the entrant to notify the Race Officer that they wish to claim "average points" by signing the race entry form with the boat class and sail number noted.
- c) A minimum of two entrants must sign on to constitute a race. Where only one entrant signs on for a race they may be awarded "average points" for that race by the Race Officer who must complete a results form and annotate it accordingly.
- d) The number of races to count in the series will be as follows:

Races sailed: N	1	2	3	4	5	6	7	etc
No. to count: N/2 raised to next highest whole number	1	2	2	3	3	4	4	etc

16. Double Race Scoring

Two races are scheduled on each day and will be scored separately.

17. Handicaps.

Handicaps will be assigned in accordance with the following order of precedence:

- 1. RYA Portsmouth Yardstick List for 2011
- 2. Class Association Portsmouth Yardstick numbers
- 3. Boat Suppliers' Portsmouth Yardstick numbers
- 4. As decided by the Race Committee

18. Support Boats:

No assistance will be given after the Preparatory Signal of the class starting except for Novices & inexperienced Cadets where help with navigation, and sail trimming will be offered for those requesting it. This varies RRS 41.

19. Declarations, Retirements and Results:

- a) Any boat which crosses the Finishing Line and does not signify that it has retired shall be deemed to have completed the race in accordance with the sailing instructions. They also need to sign out at the Sailing Centre within half an hour of coming ashore.
- b) Entrants retiring from a race shall inform the Race Officer at the earliest opportunity.
- c) Results will be posted on the notice board in the Club foyer by the Race Officer as soon as is practical after racing finishes. The series results will be posted on the BHYC web site as the series progresses and on the Club notice board upon completion of the series.
- d) Prizes will be awarded as follows:

Minimum number of qualifiers in series	Two	Four	Six or more
Prizes awarded	First only	First and Second	First, Second and Third

Flags & Signals (see RRS for full list)



Sail all marks shown before this board then the remainder of course.



Numeral Pennant No. 4



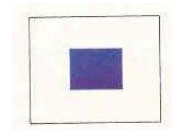
Postponement



General Recall



Change of Course



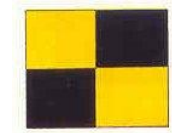
Shorten Course



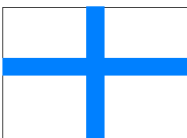
Preparatory Signal



Racing Abandoned



Refer to Notice board

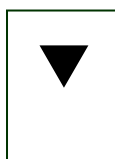


Individual Recall

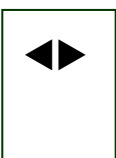
Special Marks



Inflatable mark to windward



Inflatable mark to leeward

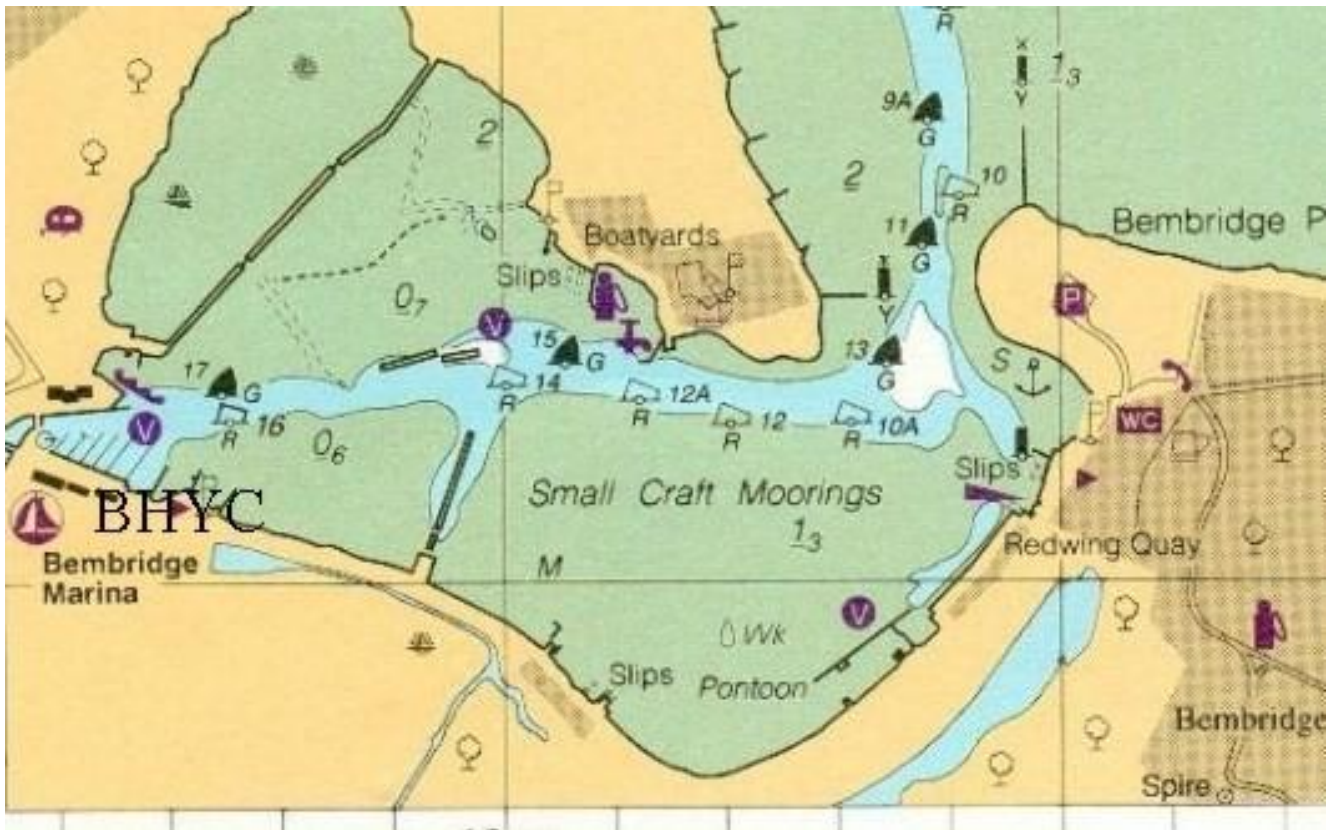


Inflatable wing mark



When shown on the Committee Boat, all boats must pass through the Finishing Line on each round after rounding the leeward mark

Bembridge Harbour Chartlet



£ BROADHOLE Small Orange Spherical
& No 10A CHANNEL Red Spherical

_ No 14 CHANNEL Red Spherical

Notes:

- The symbols used to denote buoys 10A and 14 may be substituted by their numerals.
- Other buoys within the Harbour may be used, in which case, the number shown will correspond with the buoy number.