

Brading Haven Yacht Club



Notice of Race
Race Sailing Instructions &
Race Officer Guidance

2019

**Racing for 2019 is organised on behalf of
Brading Haven Yacht Club Racing Section by:**

Anne Barlow	Rear Commodore Sailing
Chris Wilkinson	Sailing Committee Member
Roger Herbert	Sailing Committee Member
Duncan Bates	RTC Principal

All members who race any class of boat or who assist in the running of races are considered to be members of the Racing Section

Any amendments to the Instructions, Programme or Support Rota will be published in the club foyer, on the notice board in the Jubilee Sailing Centre, on the Club Web Site www.bhyc.org.uk and where possible will be circulated by e-mail and/or newsletter to those who have this facility.

BHYC RACING SAILING INSTRUCTIONS & RACE OFFICER GUIDANCE

1. Notice of Race:

Racing will take place on the dates and times published in the BHYC Sailing Programme. The schedule for racing in the East Wight Combined Clubs Regattas is published in the EWCC programme.

2. Entry Form:

Entrants for all races in the BHYC Racing programme and the East Wight Combined Clubs Regatta Series must have signed an **Entry Form**, which includes agreement to be bound by the Conditions of Entry, prior to taking part in their first race of the season (April 2019 – April 2020).

Parents or guardians must countersign Entry Forms for persons under 18 years of age. Forms will be available from the Jubilee Sailing Centre, the Club Office or the Club Web Site and signed forms will be held in the Jubilee Sailing Centre.

Failure to complete the form will result in the boat being scored DNS (Did not start).

3. Conditions of Entry:

RISK STATEMENT

Rule 4 of the Racing Rules of Sailing states: "The responsibility for a boat's decision to participate in a race or to continue racing is hers alone."

Sailing is by its nature an unpredictable sport and therefore inherently involves an element of risk. By taking part in the event, each competitor agrees and acknowledges that:

- a) They are aware of the inherent element of risk involved in the sport and accept responsibility for the exposure of themselves, their crew and their boat to such inherent risk whilst taking part in the event;
- b) They are responsible for the safety of themselves, their crew, their boat and their other property whether afloat or ashore;
- c) They accept responsibility for any injury, damage or loss to the extent caused by their own actions or omissions;
- d) Their boat is in good order, equipped to sail in the event and they are fit to participate
- e) The provision of a race management team, patrol boats and other officials and volunteers by the event organiser does not relieve them of their own responsibilities;
- f) The provision of patrol boat cover is limited to such assistance, particularly in extreme weather conditions, as can be practically provided in the circumstances;
- g) It is their responsibility to familiarise themselves with any risks specific to this venue or this event drawn to their attention in any rules and information produced for the venue or event and to attend any safety briefing held for the event;
- h) They are responsible for ensuring that their boat is equipped and seaworthy so as to be able to face extremes of weather; that there is a crew sufficient in number, experience and fitness to withstand such weather; and that the safety equipment is properly maintained, stowed and in date and is familiar to the crew; and
- i) Their boat is adequately insured, with cover of at least £3,000,000 against third party claims.

4. General Conditions of Racing: Sailing Instructions:

- a) Racing is conducted in accordance with the RYA racing charter to promote fair and enjoyable racing for all.
- b) All races will be governed by the Racing Rules of Sailing 2017/2020 published by World Sailing, SCRA Regulations except as any of these are changed by these sailing instructions.
- c) The international Regulations for Prevention of Collisions at Sea (IRPCS) apply when a boat sailing under racing rules meets a vessel that is not. If the racing boat fails to comply with this obligation she may be protested and penalised. The Club draws attention of members to Rule 9 of the International Regulations Preventing Collisions at Sea (COLREGS 1972), in respect of operation of vessels operating in Narrow Channels.
- d) All entrants are required to sign on in the Jubilee Sailing Centre before starting. Failure to do so may cause them to be classified as DNS. They must notify the Race Officer if they retire or fail to complete the course as instructed.
- e) Entrants from other RYA-affiliated sailing clubs are welcome to participate in BHYC races as visitors on a maximum of six occasions each year; they must obtain the approval of the Race Officer before entering a race and complete the conditions of Entry Form and the sign on form at the Jubilee Sailing Centre.
- f) The Race Officer may brief the competitors and safety crews prior to the commencement of racing and/or the regatta highlighting the course to be sailed and the sailing area it is to be sailed in.
- g) All competitors must wear personal buoyancy at all times when racing, except when changing personal clothing or personal equipment. An adequate flotation device is a life-jacket or buoyancy aid to a minimum of 50 Newtons EN393/ISO12402-5, or 100 Newtons for weak swimmers or non-swimmers. (This adds to RRS 1.2, Failure to comply with this rule will result in disqualification without hearing. Flag "Y" will not be displayed, this changes RRS 40.)
- h) Any collision with a moored boat must be notified to the owner and to the Race Officer without delay.

5. Racing Notices and Signals:

- a) The schedule of racing for the season is given in the Club programme. Unless notified otherwise, dinghies will race in two groups with 5 minutes between Starts. In the Handicap races, results will be recorded for Fast handicap (under PY 1250) and Slow handicap (PY 1250 and over). Scows, and any other classes afforded their own Start will be recorded separately. The start time shown in the programme is that of the first race in the following order of races:
 - Handicap
 - Scows
- b) If 3 boats or more of any individual class present at the first race of each series that class may be afforded a separate class race/start if so requested by the class captain. If the number of boats in that class subsequently falls below 2 then they may compete in the Handicap races.
- c) Competitors should make every effort to sign-on for the race 30 minutes before the published Start time. Failure to do risks disqualification.
- d) Notice of alterations or supplements to the racing instructions may be indicated by International Code Flag "L" being flown from the Jubilee Sailing Centre or Committee Boat. The additional instructions will be posted on the official Notice Board which is located in the Jubilee Sailing Centre or, in case of a Committee Boat start, may be given orally by loudhailer (under RRS 80.2). In addition a board may be used.

- e) The following Class Boards/Class Flags, or combinations, will be used to identify racing groups:

Fast Handicap: Numeral Pennant 3

Slow Handicap Numeral Pennant 4

Scows: Scow Class Flag

6. Courses and Course Signals:

The racing area is shown on the chart within these instructions. The course to be sailed and the number of rounds is at the discretion of the Race Officer. Guidance for Race Officers is found in the Appendix.

- The course to be sailed, consisting of fixed and movable inflatable buoys will be displayed by letters, numbers and symbols as listed on the chart within these instructions. This will be displayed on the frame above the Jubilee Sailing Centre or on the Committee Boat no later than at the Preparatory Signal.
- A Green background indicates a mark to be left to Starboard; a Red background indicates a mark to be left to Port.
- The sequence of marks indicates the order in which the course is to be sailed. When inflatable marks are to be used their approximate position will be indicated on the white board at the Jubilee Sailing Centre.
- The symbols used to denote buoys 10A and 14 may be substituted by their numerals.
- Other buoys within the harbour may be used, in which case the number shown will correspond with the buoy number.

7. Mandatory Marks:

To minimise the risk of collision with larger vessels using the main channel the following course restrictions must be obeyed.

Course	Leave to Port	Leave to Starboard
On a leg of a course which is leaving the harbour:	Buoys 14, 12A, & 12	Buoys 11 & 9
On a leg of a course returning to the harbour:	Buoys 9 & 11	Buoys 12, 12A & 14

Note: Buoys 12, 12A & 14 are red can main channel marks situated between Fisherman's Wharf and the harbour entrance. Buoys 9 & 11 are green conical main channel marks situated just outside the harbour entrance.

Boats must not pass through the groynes on either the St. Helens or the Bembridge shore

8. Number of Rounds:

All races shall consist of time-limited multiple laps unless instructed otherwise by the Race Officer.

- When a course consists of time-limited (e.g. 45-60 mins) multiple laps the course may be shortened at the discretion of the Race officer. Results shall be calculated on the basis of average lap times.
- When a race requires the course, or part of the course, to be sailed more than once, a black board with white diamonds will be displayed on the Committee Boat, or in case of Harbour Start from the Jubilee Centre. The number of diamonds on the course board indicates the number of times that the sequence preceding it shall be sailed before continuing with the remainder of the course.
- If a black and orange chequered board is displayed in the course sequence, the mark(s) of the course preceding it shall be sailed before continuing to the marks and number of rounds

- d) In all cases competitors are to sail through the finish line on the windward leg each time after rounding the leeward mark. On any other leg of the course the start / finish line shall constitute an obstruction and shall not be sailed through.

9. Distant Windward & Leeward Marks:

- a) To enable all classes to be sailing windward/leeward legs in the same area a course may be set with two windward or two leeward inflatable marks. The Handicap class will use the further distant inflatable windward or leeward mark as displayed. The Slow class will use the nearer standard windward/leeward mark.

- b) The designated legend for a distant windward mark will be:

Two white triangles, pointing up, on a red or green background.



- c) The designated legend for a distant leeward mark will be:

Two white triangles, pointing down, on a red or green background.



- d) For all courses: Green background, leave to starboard; Red background, leave to port.

10. Shorten Course and Course Changes:

- a) These will be indicated by the display of International Code Flag “S” or “C” respectively, with appropriate sound signals (2 blasts for S, multiple sounds for C) and new course displayed, or where necessary, by verbal instructions of the Race Officer relayed by the Support Boats this changes RRS 33.

- b) The finishing line shall be,

at a rounding mark, between the mark and a staff displaying flag S;
or at a line, the course requires boats to cross.
or at a gate, between the gate marks.

11. Courses: The course to be sailed and the number of rounds are at the discretion of the Race Officer. Guidance for Race Officers is found in the Appendix.

When starting from a Committee Boat, excepting in the case of a special event, one of the following five course types should be set: Course 1 (Olympic triangle-sausage), Course 2 (Olympic trapezoid), Course 3 (q or p) Course 4 (trapezoidal) or Course 5 (Windward/Leeward). The course to be sailed will be indicated by a black board with a white numeral ‘1’; ‘2’; ‘3’; ‘4’; ‘5’, or alternative

Course 1. (See Illustration for further details)

Will be sailed with marks rounded to port or starboard in the following order:
Start-1-2-3-1-3-1-2-3-Finish.

Course 2 (See Illustration for further details)

Will be sailed with marks rounded to port or starboard in the following order: Start-1-2-3-2-3-Finish.

Course 3. (See illustration for further details)

Will be sailed with marks rounded to port or starboard.

Course 4. (See illustration for further details)

Will be sailed with marks rounded to port or starboard.

Course 5. (See illustration for further details)

Will be sailed with marks rounded to port or starboard.

Marks will be displayed on the frame of the Jubilee Sailing Centre or Committee Boat. Green

background, leave marks to starboard. Red background, leave marks to port.

12. Starting Signals:

For both Harbour Line and Committee Boat Starts, Starting Signals will conform to RRS (5,4,1,0). The Harbour Line Starting System is further modified by using lights instead of flags as follows.

Postponement: In the event of a postponement flag AP shall be replaced with a flashing red light (This alters race signals)

Starting:

Class	Warning Signal (-5)	Preparatory Signal (-4)	One Minute (-1)	Start
Handicap	Red light On	Orange light On	Green light On	Lights Off
Scows	Red light On	Orange light On	Green light On	Lights Off

13. Recalls:

Altering Race Signals

- Individual boats over the line at the start of a race will be recalled by a second sound signal. For a **Committee Boat start** the X flag will be flown, or in the case of **Harbour Starts**, a solid red and flashing green light will show for four minutes
- Where a number of unidentified premature starters are involved, or there has been an error in the starting procedure, a General Recall will be signalled by two sound signals and hoisting International Code Flag 'First Substitute', or in the case of Harbour starts all lights will flash.
- The warning signal for a new start for the recalled class will be made one minute after the 'First Substitute' is removed (one sound) or the lights extinguished. Starts for any succeeding classes will follow the new start.

14. Starting and Finishing Lines:

Harbour Line

- The Starting and Finishing Line is the extension of a line through the Red and White Post on the Jubilee Sailing Centre and the Black and White Post situated on the foreshore in front of it, which also serves as the Inner Limit. The Outer Limit is a Black and White Post situated 500 feet North of the Jubilee Sailing Centre.
- Only those boats in their start sequence may be in the immediate vicinity of the start line prior to the commencement of the race

Committee Boat Line

- The Starting and Finishing Line is an imaginary line connecting the orange rectangular flag on the Committee Boat, and an adjacent nominated Navigation Buoy, Racing Mark or Inflatable Mark which serves as the Outer Limit. A small buoy - the Inner Limit - may also be laid, not necessarily on the line, approximately 10 yards from the Committee Boat. For the purpose of RRS 31.1 the Outer Limit, Inner Limit and Committee Boat are Marks of the Starting Line.
- Only those boats in their start sequence may be in the immediate vicinity of the start line prior to the commencement of the race
- Boats must cross the Starting Line in the direction of the first Racing Mark and must finish from the direction of the last Racing Mark.
- The Committee Boat will normally fly a blue flag to indicate it is in position for the finish.

13. Finishing:

When sailing in separate fleets boats shall finish by sailing through the finish line. Unless a Pursuit Race, when sailing time-limited multiple laps, results will be calculated on the basis of the average lap time although boats from the same class who have completed more laps shall always be placed ahead of competitors even if the average lap time is less.

14. Penalty System:

The penalties specified under RRS 44.1 shall be varied as follows:
Breaking Part 2 rule – 1 penalty turn shall apply.

15. Time Limit:

The time limit will be 20 minutes after shortening of the course. That race will be valid only for those boats finishing in the time limit.

16. Protests:

An informal protest hearing may be heard in order to encourage competitors to lodge protests when they might not normally do so. The parties to the protest must first agree to the Informal Meeting, otherwise a formal hearing will take place as per RRS Part 5 Sections A & B. Protestees should lodge their intention with the Race Officer as soon as possible after the incident. The time limit is one hour after the last boat finishes the race, where 2 races are scheduled that shall be 1 hour after the second race. The full procedure for the informal hearing is in the Racing Results folder, situated in the Jubilee Sailing Centre.

17. Scoring:

- a) Scoring for Series Events will be in accordance with RRS Appendix A4.1 as modified by Appendix A9 using the Low Point System. Ties will be broken by RRS Appendix A8. Points will be awarded to entrants, not the boat.
- b) Entrants who carry out Race Management duties, or represent BHYC in a programmed sailing match in lieu of racing in a series, may be awarded average points as compensation, calculated from the mean of their other results from races they have actually sailed in the series. It is the duty of the entrant to notify the Race Officer that they wish to claim “average points” by signing the race entry form with the boat class and sail number noted.
- c) A minimum of two entrants must sign on to constitute a race. Where only one entrant signs on for and starts a race they may be awarded “average points” for that race by the Race Officer who must complete a results form and annotate it accordingly.
- d) The number of races to count in a series will be calculated as follows:

Races sailed: N	1	2	3	4	5	6	7	etc
No. to count: N/2 raised to next highest whole number	1	2	2	3	3	4	4	etc

18. Double Race Scoring:

On days when two races are scheduled, each race will be scored separately.

19. Handicap Adjustment:

Unless otherwise agreed by the Sailing Committee, handicaps for classes will be assigned in accordance with the following order of precedence:

- 1. BHYC PY 2019 As decided by the Race Committee (available on the Web Site)
- 2. RYA Portsmouth Yardstick List (updated for 2019 when available)
- 3. Class Association Portsmouth Yardstick numbers
- 4. Boat Suppliers' Portsmouth Yardstick number

At the discretion of the race committee, personal handicaps may be appointed to any sailor for any particular series or race.

20. Support Boats:

No assistance will be given after the Preparatory Signal of the class starting except for Novices & inexperienced Cadets where help with navigation, and sail trimming will be offered for those requesting it. This varies RRS 41.

21. Declarations, Retirements, Results and Prizes:

- a) Any boat which crosses the Finishing Line and does not signify that it has retired shall be deemed to have completed the race in accordance with the sailing instructions.
- b) Entrants retiring from a race shall inform the Patrol Boats/Race Officer at the earliest opportunity.
- c) Race results will be posted online as soon as is practical after racing finishes along with up dated Series Results.
- d) Prizes will be awarded as follows:

Minimum number of qualifiers in series	Two	Four	Six or more
Prizes awarded	First only	First and Second	First, Second and Third

22. Schedule of Racing:

To reduce congestion in the harbour and to reduce the risk of collision, most weekend racing will be from a Committee Boat outside the harbour. Evening races may be started and finished from the Harbour Line (H). Separate sailing instructions shall apply to the open icebreaker series. All race details are published in the Club Sailing Programme available in the Club foyer or can be downloaded as a pdf from the Club website www.bhyc.org.uk. Where the Race Officer determines that conditions prohibit weekend racing outside the harbour then races may be run inside the harbour, however these may not count towards series results.

23. Racing Groups & Race Starts:

- a) Dinghies will race in two separate groups, Handicap and Scows, with 5 min between starts. The Start sequence will be 5, 4, 1, Start.
- b) Separate Starts may be organised for Special Races and Classes.
- c) The start time and starting line (Home 'H' or Committee Boat 'CB') shown in the programme is that of the first race

24. Novice/Cadet Races:

Cadet and Novices are encouraged to join in the Racing Programme at any time. If requested, assistance on the course and the conduct of the race will be given by the Race Officer and those on the support boats. In races specifically for Novices, in each crewed boat the helm must be a novice (less than two years' experience). In each single-hander (including Scows) the helm must be a Novice but an experienced advisor may be carried.

25. TRASH:

Trash may be placed aboard support or official boats.

The penalty for breaking rule 55, Trash Disposal, is at the discretion of the protest committee (DPI) and may be less than disqualification.

26. Risk Statement:

The responsibility for the boat's decision to participate in a race or to continue racing is hers alone. Sailing is by its nature an unpredictable sport and therefore involves an element of risk.

By taking part in the event, each competitor acknowledges that:

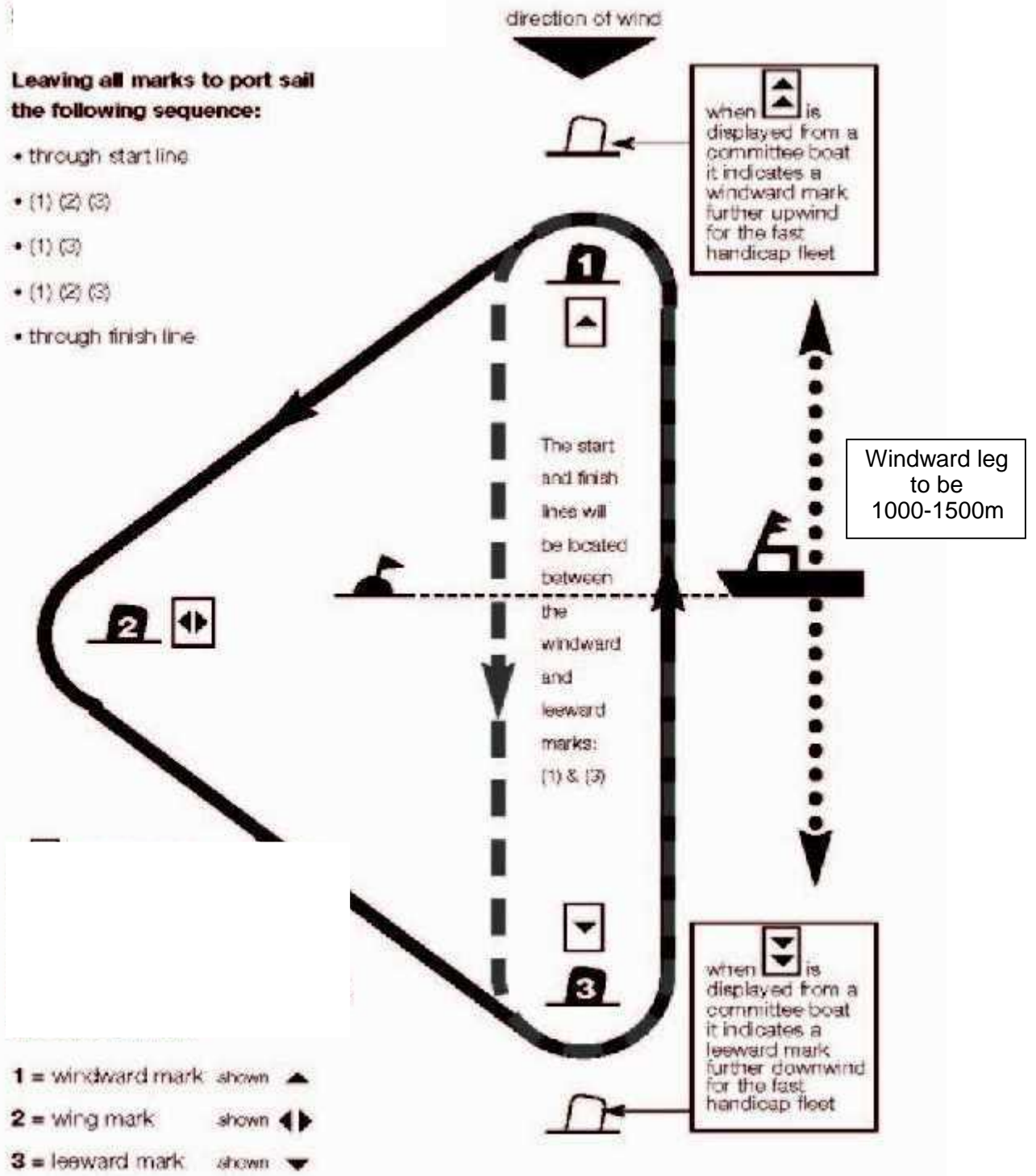
- a) They are responsible for the safety of themselves, their crew, their boat and others property.

whether afloat or ashore.

- b) They accept responsibility for any injury, damage or loss to the extent caused by their own actions or omissions.
- c) Their boat is in good order, equipped to sail in the event and is fit to participate.
- d) The provision of a race management team, patrol boats, umpires and other officials and volunteers by the organiser does not relieve them of their responsibilities.
- e) The provision of patrol boat cover is limited to such assistance, particularly in extreme weather conditions, as practically provided in the circumstances.
- f) All boats must be adequately insured, with cover of a least £3million against third party claims.

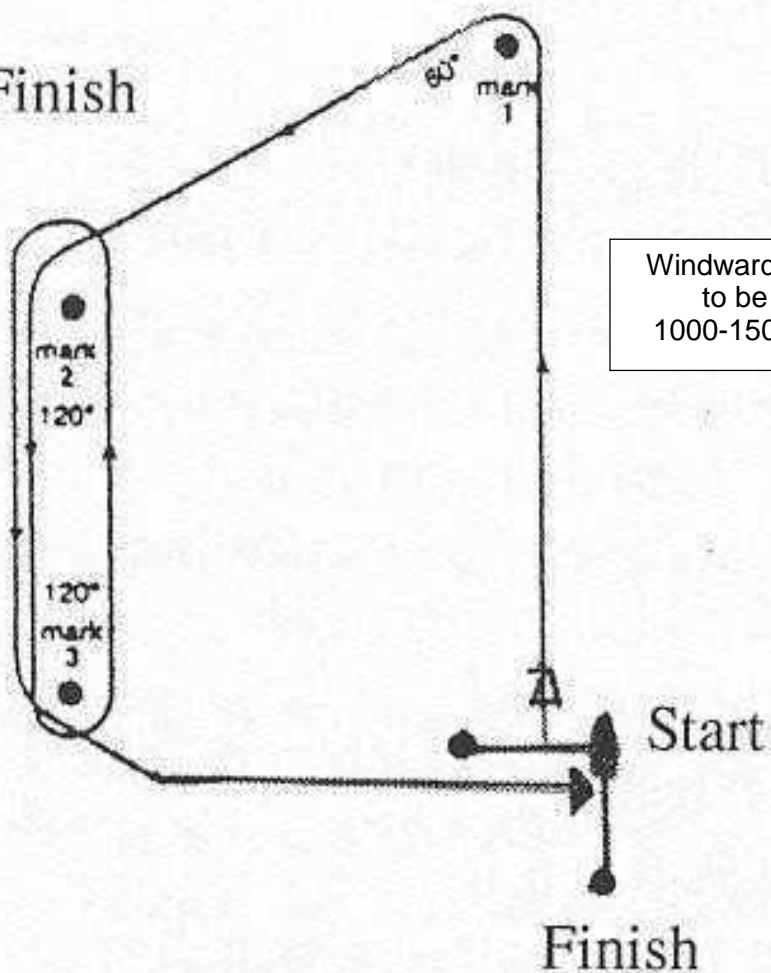
SPECIAL COURSE 1

(showing marks left to Port)

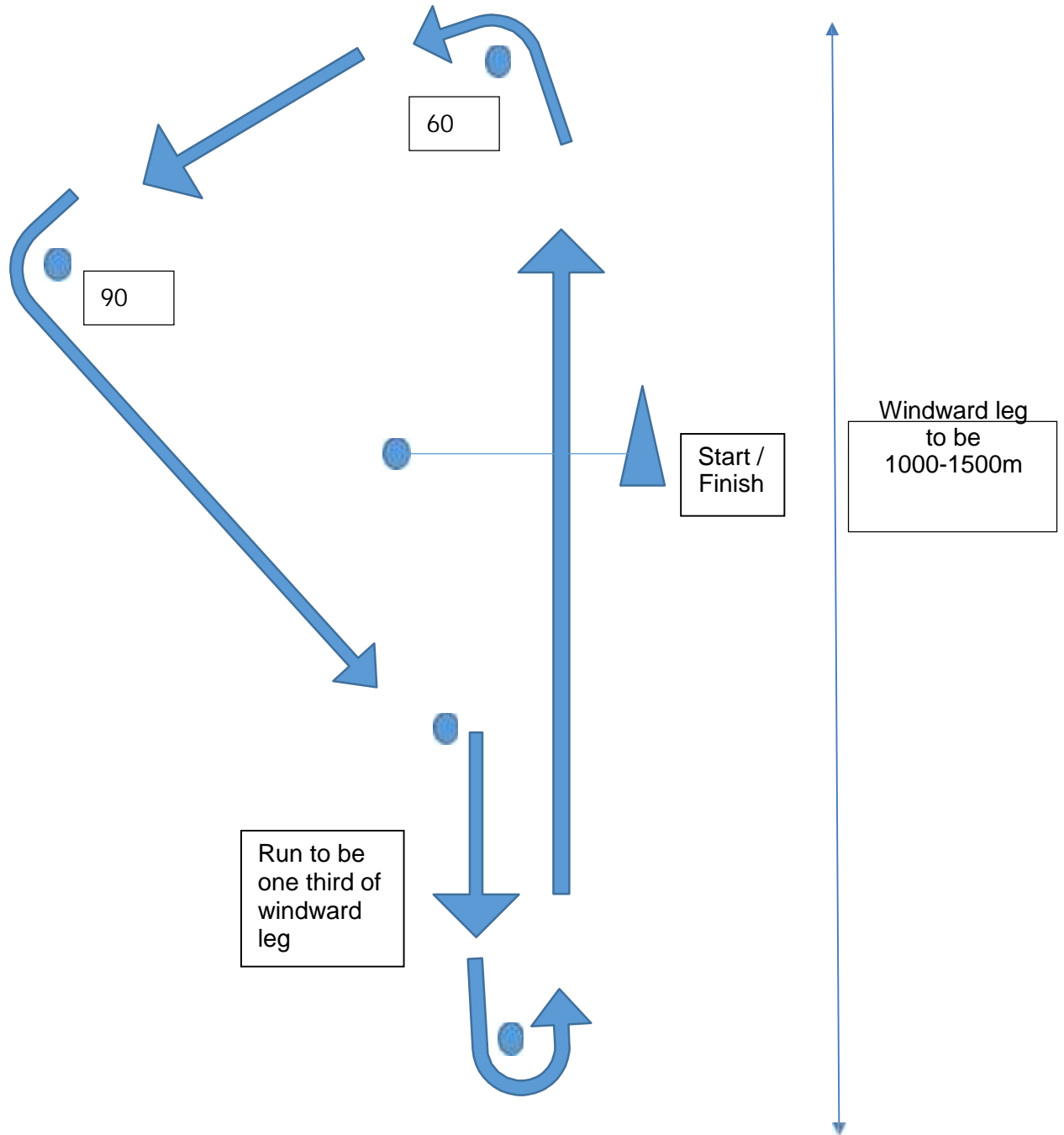


SPECIAL COURSE 2

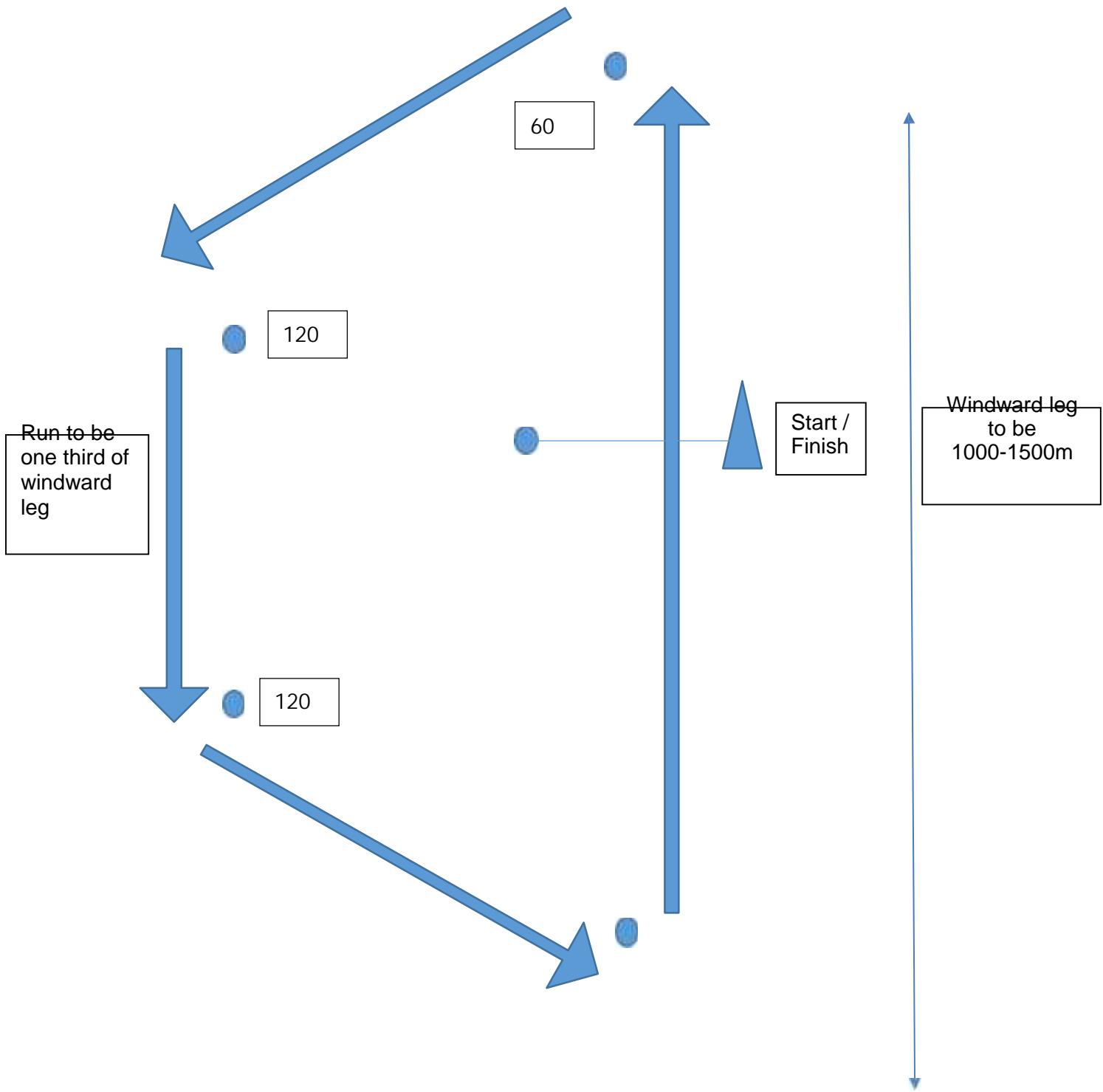
Start-1-2-3-2-3-Finish



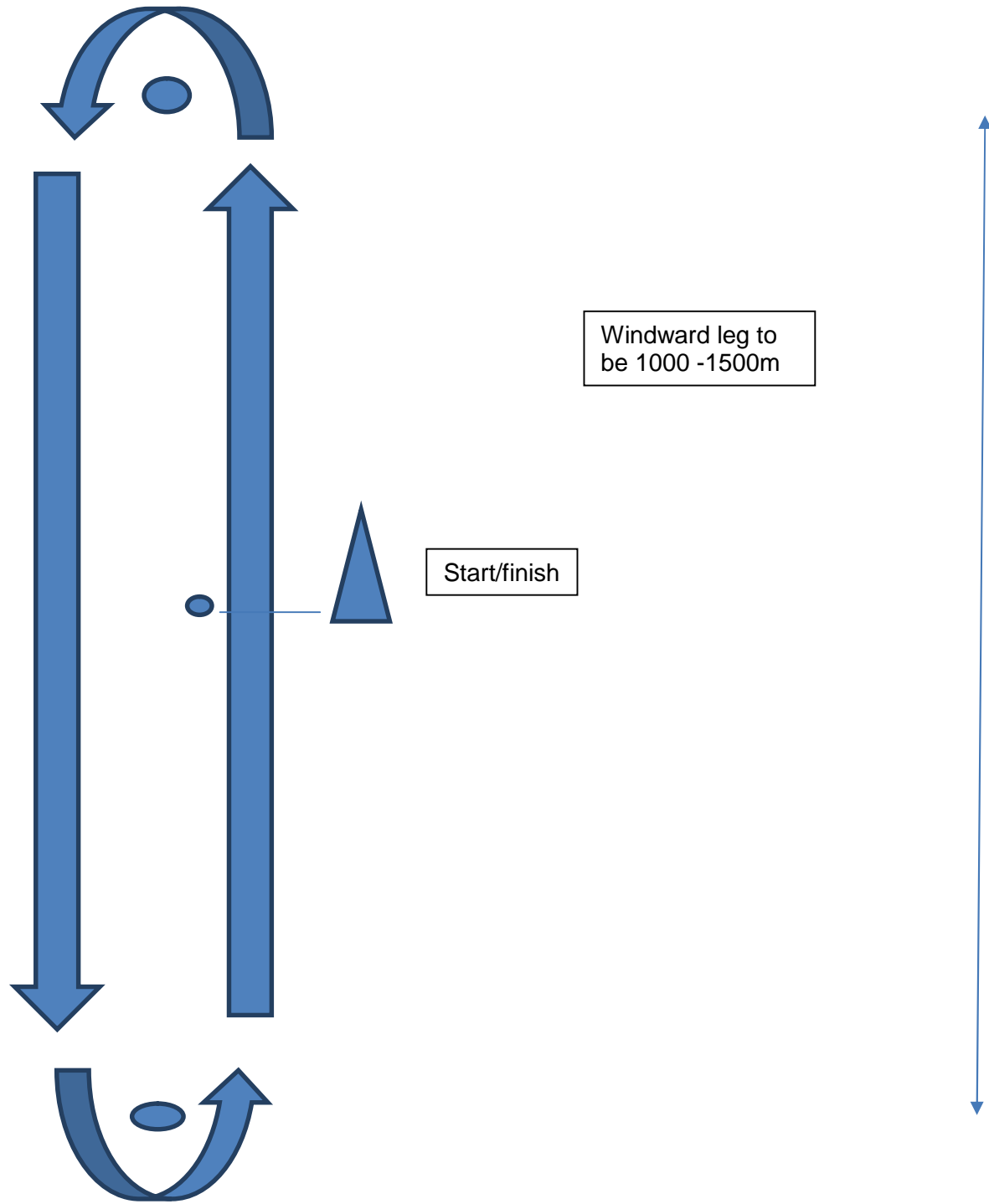
Special Course 3 'q or p'



Special Course 4 'Trapezoidal'



Special Course 5 Windward/Leeward



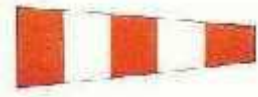
Flags & Signals (see RRS for full list)



Fast



Scow



Postponement



General Recall



Change of Course



Shorten Course



Preparatory Signal



Racing Abandoned



Code 'L' Refer to Notice board



Slow



Sail all marks shown before this board then the remainder of course.



Code 'X' Individual Recall

Marks



Distant inflatable mark to windward



Inflatable mark to windward



Inflatable mark to leeward



Inflatable wing mark

Special Courses



Special Course '1'



Special Course '2' Olympic Trapizoid



Special Course '3' Course ,q or p



Special Course '4' Trapizoid



Special Course '5' Windward-Leeward

APPENDIX

RACE OFFICER GUIDANCE

Race officers are required to run races in accordance with the BHYC Standard Operating Procedures (SOPs) and Sailing Instructions variation of which must be approved by the BHYC Racing Section and notified to competitors in advance

All Race Officers must complete a risk assessment form (using the risk management template) to record the prevailing conditions for racing and ensure they have the required level of support. They must log the number of boats taking part and check that they all returned safely before releasing the support boats.

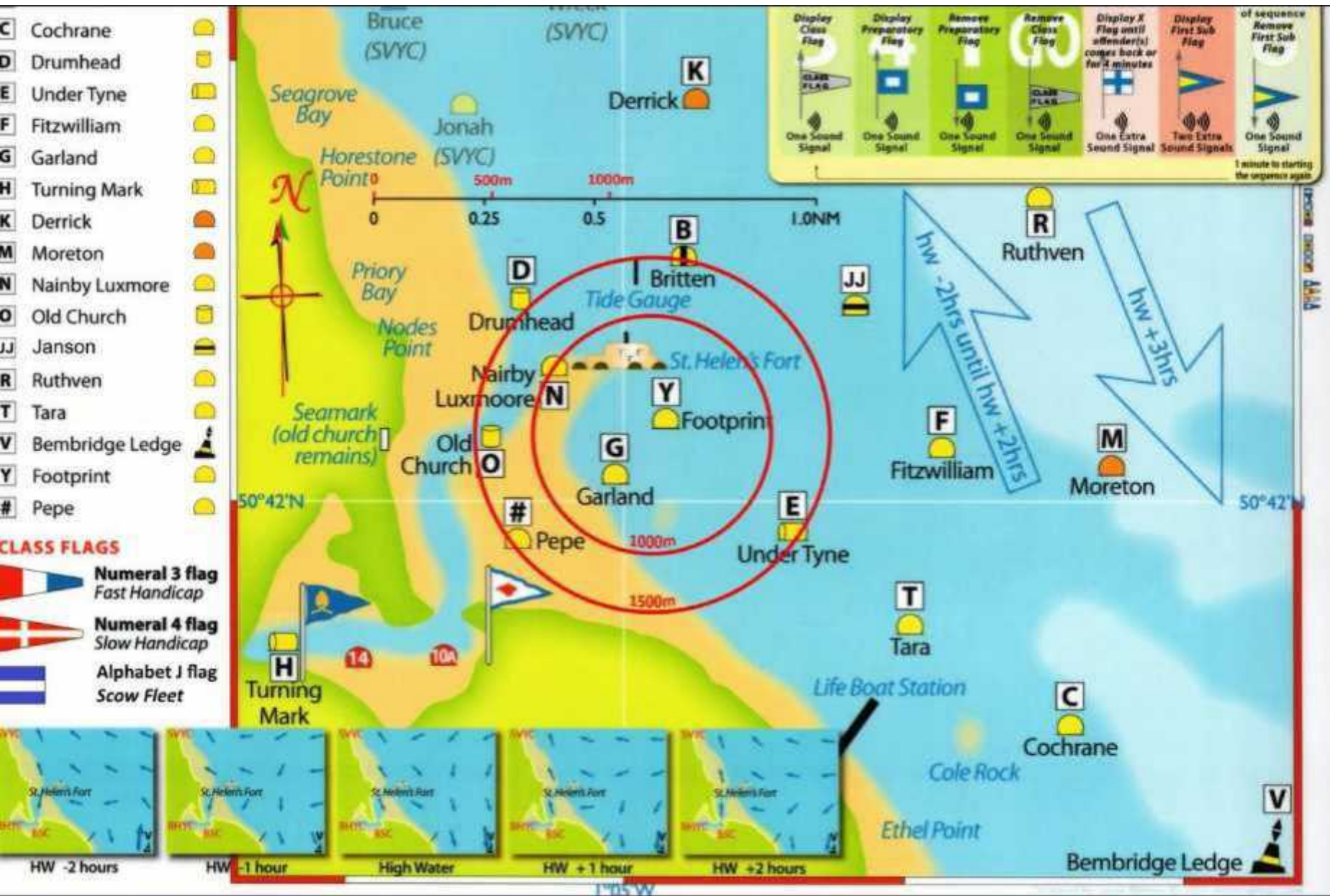
For handicap racing it is critically important that courses are not set to the advantage / disadvantage of different boat types. As a consequence courses should be set with approximately two thirds of the downwind leg as 120 degree reaches and one third as a run. The required course types defined in the SIs provide this.

In all cases the beat length shall be in the range 1000m - 1500m within the area as shown in the racing area map overleaf

Course 3 and 4 provide shorter laps and consequently better scope to manage racing within time constraints.

A different course may be set at the discretion of the race officer for special events although that should provide for a similar proportion of legs on the same points of sailing.

Racing Area Chart



NOTES